

# Formal Gardens

Based on symmetry, geometric shapes, and straight lines. This style blends well with minimalist buildings. The repetition of plants, shapes, and materials are foundations of formal-style gardens.

























# Informal Gardens

Informal gardens sit easily in their surroundings and emulate the bends and curves of nature. Meandering, curving paths with fewer defined edges are characteristic of these gardens. The shapes of the plantings will mirror natural surroundings and look more like a forest or field.















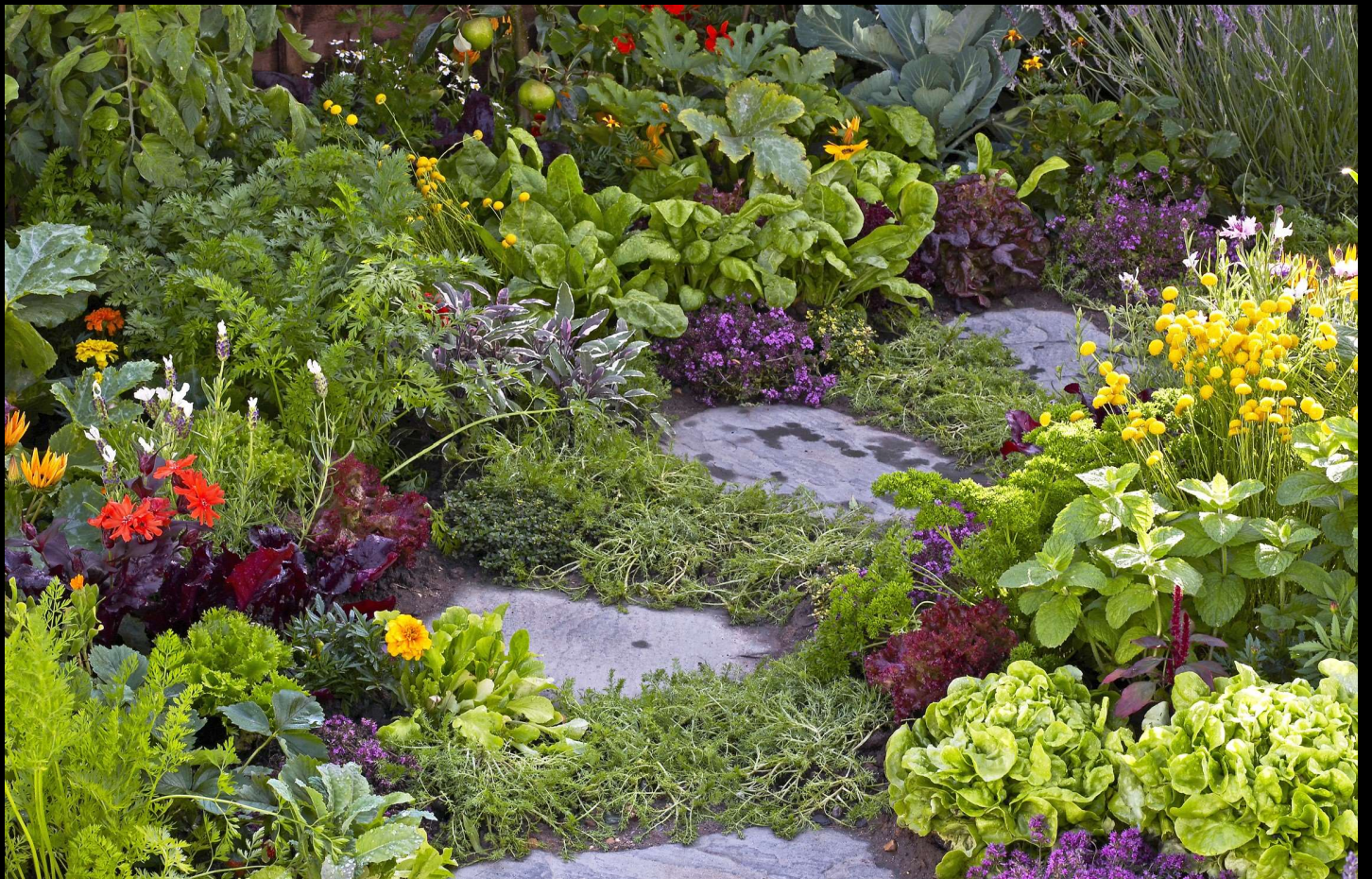
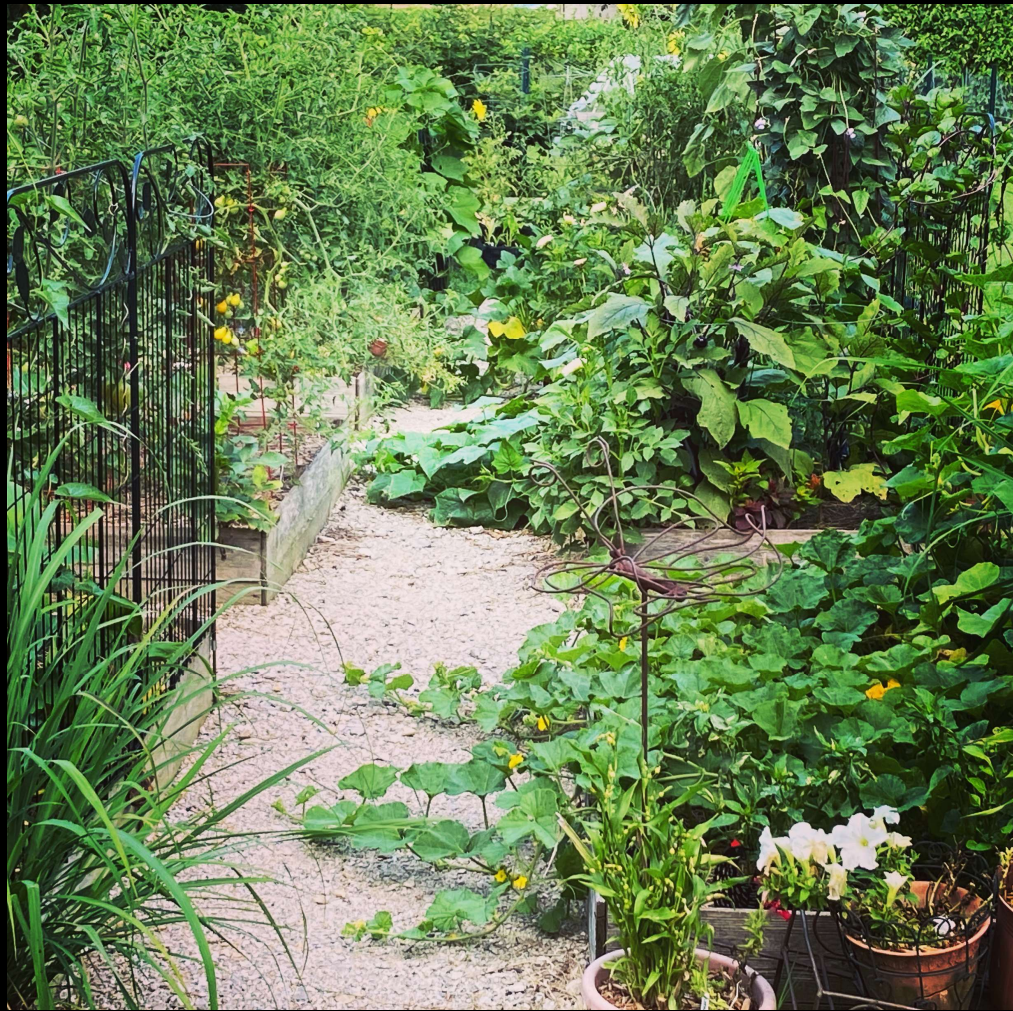














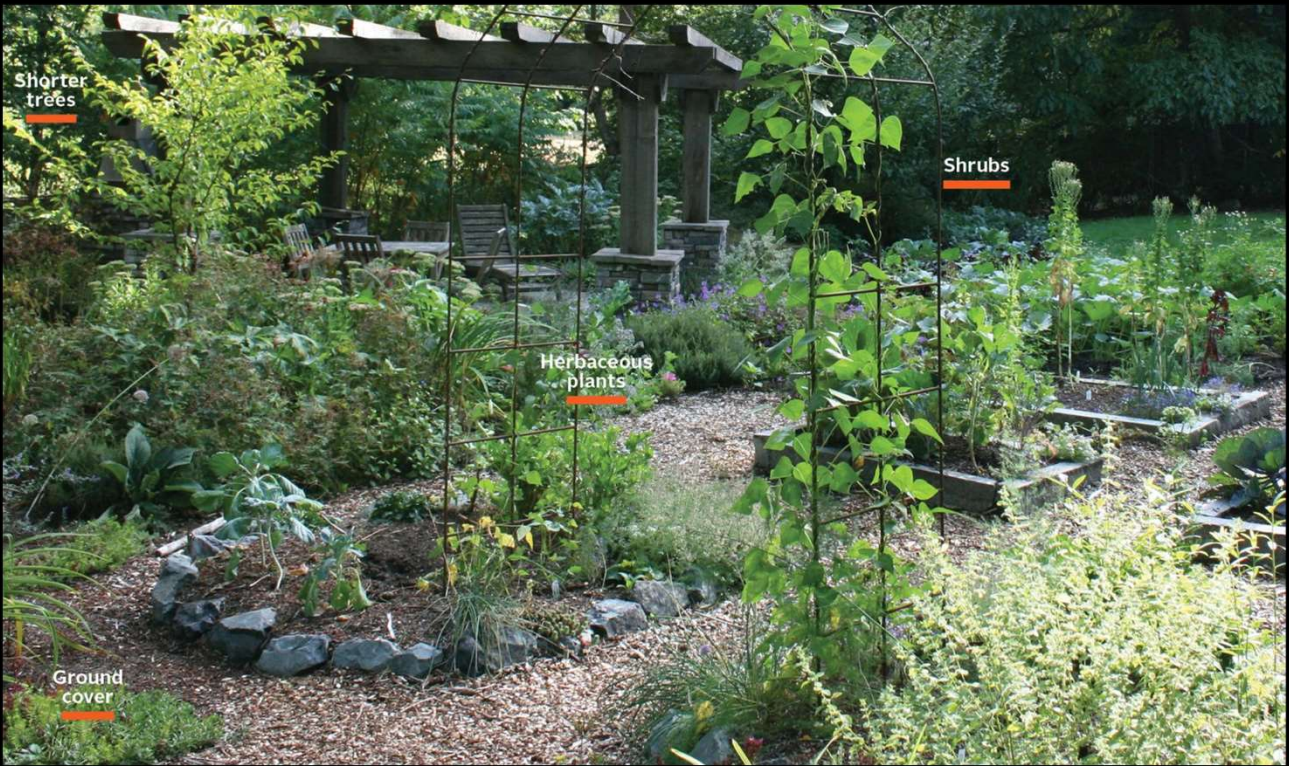
# Romantic/Cottage Gardens

In these whimsical gardens old favorite plants, like roses, lavender, and wisteria, may intermingle with your vegetables.

These gardens tend to have curves, hidden seating, and scented plants that make the garden as welcoming and cozy as they are productive. The background of these gardens was to produce food for the home in a small plot that doubles as a livable space.









































# Japanese Gardens

Japanese gardens often incorporate distant scenery as part of the design and also incorporate the idea of the courtyard or tea garden, where stones, water features, shrubs, or trees can occupy the space with your edible plants. These work well with modern minimalist buildings. Space, illusion, and the control of natural elements are the foundations of these spaces.

























# Contemporary Gardens

These gardens are functional with clean lines. Stone and hardwood, among other modern materials, are used instead of natural stones or brick and hard landscaping helps retain functionality. Vertical elements, like walls, and trellises, are painted in contemporary colors that compliment plant colors. Water features and containers make bold statements.





























# Raised Bed Gardens

Raised bed gardens provide many benefits. These incorporate your personal design preferences into structures that fit into your space perfectly, allowing your garden to look professional and beautiful. Raised beds provide maximum control over soil and will last for years, growing whatever edible foods and flowers you want in your space.













































